



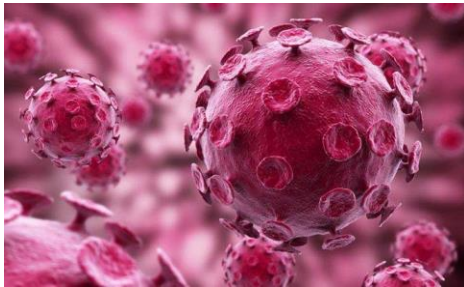
北京师范大学智慧学习研究院  
Smart Learning Institute of Beijing Normal University

# Novel Coronavirus

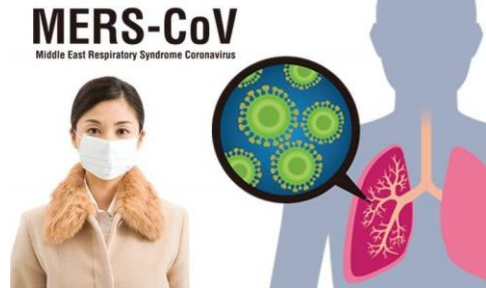
## What is Novel Coronavirus?

①

Coronaviruses are a large group of viruses that can cause illnesses as minor as a cold, or as serious as a severe pulmonary infection, such as Middle East Respiratory Syndrome (MERS) and Severe Acute Respiratory Syndrome (SARS). The Novel Coronavirus COVID-19 in Wuhan is a new type of coronavirus not previously found in humans.



COVID-19  
([www.thepaper.cn](http://www.thepaper.cn))



MERS  
([www.en.etemaaddaily.com](http://www.en.etemaaddaily.com))

## Route of Novel Coronavirus transmission

②

### (1) Direct Transmission

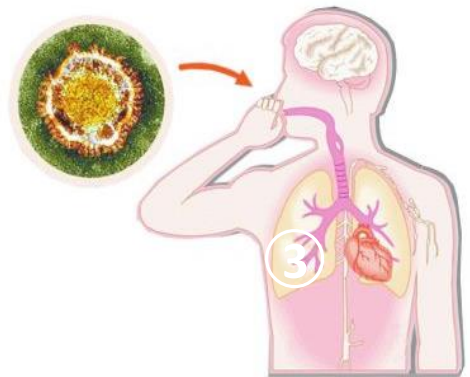
The droplets that appear after the sufferer sneezes, coughs and talks can be inhaled directly via close contact, which will cause infection.

### (2) Aerosol Transmission

Droplets are mixed in the air, forming aerosols that can cause infection when inhaled.

### (3) Contact Transmission

Droplets deposited on the surface of an object can contact and contaminate hands, which in turn will cause infection through the mucous membranes of the mouth, nose and eyes.



Novel Coronavirus Transmission  
([www.kaixian.tv](http://www.kaixian.tv))



## The symptoms of Novel Coronavirus Pneumonia

3

The common symptoms of Novel Coronavirus Pneumonia (NCP) include: **fever, fatigue, dry cough, and gradual dyspnea**. Some patients start with mild symptoms, or even no significant fever. Severe symptoms include **Acute Respiratory Distress Syndrome (ARDS), septic shock, hard-to-correct metabolic acidosis, and coagulation disorder**. From the current cases, most patients have a good prognosis and only a few patients are in critical condition, or even dead.

In addition to the above symptoms, there may be some "atypical" symptoms, for instance:

- (1) The symptoms of digestive system as the first manifestation, such as **a mild loss of appetite, weakness, low spirits, nausea and vomiting, diarrhea, etc.**
- (2) The symptoms of neurological system as the first manifestation, such as **headache**.
- (3) The symptoms of cardiovascular system as the first manifestation, such as **palpitation and oppression in chest**.
- (4) The ophthalmic symptoms as the first manifestation, such as **conjunctivitis**.
- (5) Only **mild muscle soreness in limbs or lower back**.

Symptoms of Infection	Common Cold	Novel Coronavirus Pneumonia
Breath	No difficulty or shortness of breath	Increased frequency and even difficulty of breath
Cough	Late appearance	The symptom is serious with dry cough, accompanied by cough sound and gasps, affecting sleep.
Fever	In general, patients will feel better after 48 to 72 hours and the febrifuge is effective.	The fever will last over 72 hours.
Body	There is little change in spirits, appetite and sleep.	Low spirits and loss of appetite
Others	---	The incubation period ranges from 2 to 14 days, with an average of 7 days.